



GRAPHENE XPO & Conference 2022

&



UltraWire Workshop 2022

Conductive Materials Solutions Workshop

Accommodation, Travel and General Information

Date: 29th & 30th June 2022

In person meeting venue: Conference Room
Paula Browne House,
Murray Edwards College
Cambridge
CB3 0DF

Dinner venue (29th June): Sidney Sussex College,
Cambridge,
UK

Organiser:



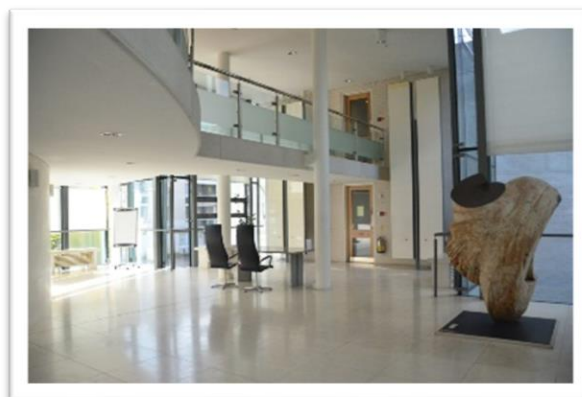
CAMBRIDGE
NANOMATERIALS
TECHNOLOGY LTD

Venue in person event:

Cambridge Nanomaterials Technology Ltd., is hosting the UltraWire 2022 Workshop together with the GraphenExpo Workshop on the 29th & 30th June 2022. This event is taking place as a hybrid event. The online event is hosted via ZOOM while the in-person venue will be the **Paula Browne House** (formerly known as the Kaetsu Centre) at the **Murray Edwards College**

Murray Edwards College

Huntingdon Road
University of Cambridge
Cambridge
CB3 0DF
Tel: 01223 762100



The College was founded as '**New Hall**' in 1954; six years after the University began awarding women degrees. They opened our doors to just 16 students in that first year, who resided in temporary accommodation while funds continued to be raised for a permanent home. This came in 1965, with the opening of their current buildings which were designed by Chamberlain, Powell and Bonn.

They adopted their current name '**Murray Edwards College**' in 2008, following a donation of £30 million from former student Ros Smith (Mrs Edwards) and her husband Steve Edwards.

The name was chosen to recognise the generosity of the Edwards family and to honour their remarkable first College president Dame Rosemary Murray, who studied Chemistry at Oxford University and became one of the first women at Lady Margaret Hall to achieve a DPhil.

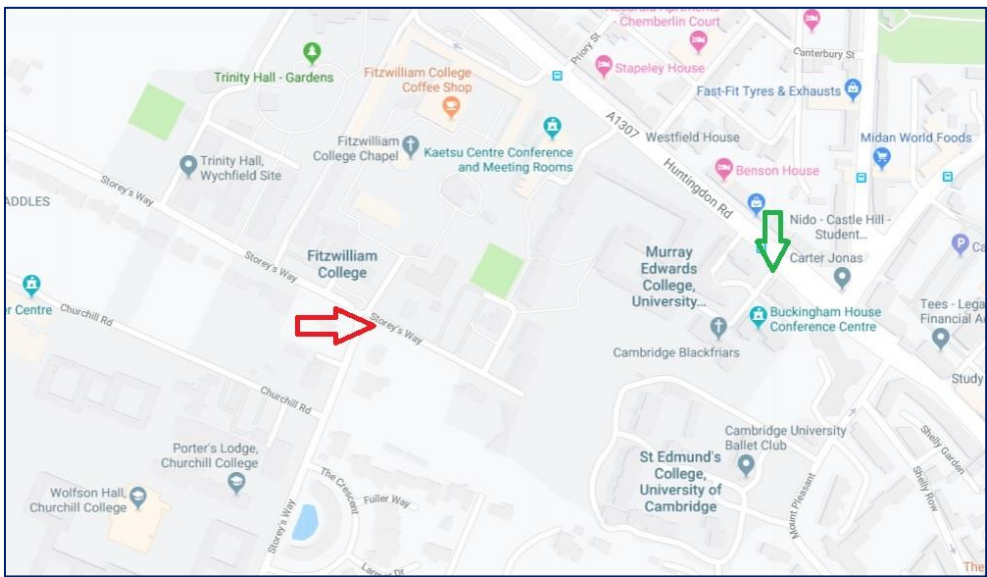


How to reach the college

The **Paula Browne House** is located between **Murray Edwards College** and Fitzwilliam College on Huntingdon Road, to the North West of Cambridge City centre.

If travelling by car (*mark in **red** on the map*), visitors should park in the car park at the rear of the College, off **Storey's Way**. Parking spaces are on a first come, first served basis. If coming from A1303 (Madingley Road) towards the City Centre. Turn to left into Storey's Way for Murray Edwards College Storey's Way car park. If using **sat-nav**, please use the post code **CB3 0DR**

If accessing by foot (mark in **green** on the map), the Porters' Lodge is accessed via **Buckingham Road** which is off **Huntingdon Road**.



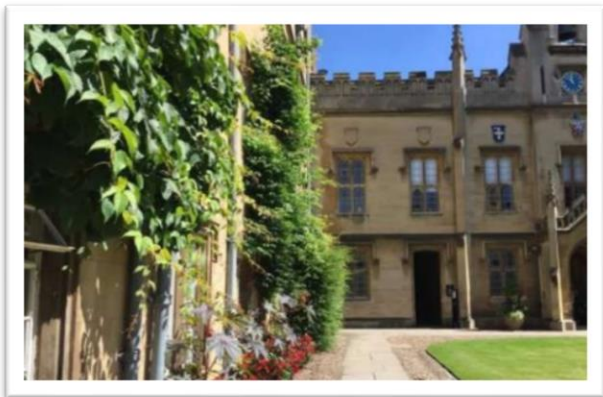
Dinner Venue:

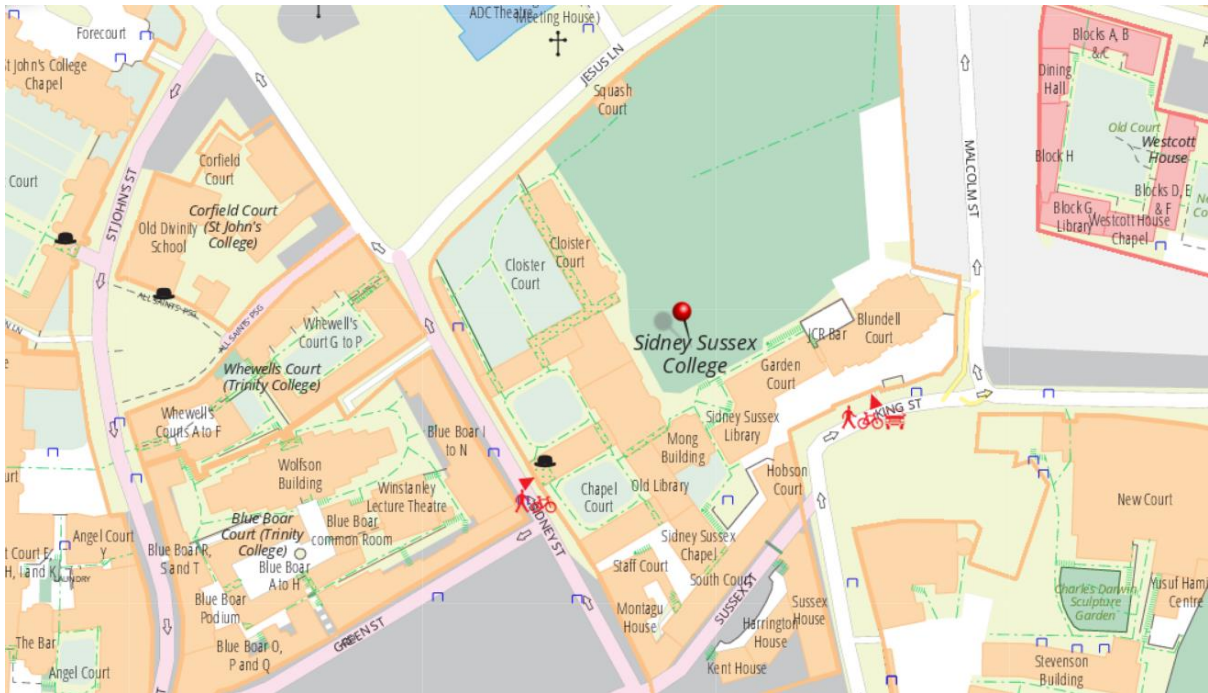
Dinner will be taking place at the Old Library in **Sidney Sussex College**, with welcome drinks served on the college gardens (weather permitting).

The Old Library
Sidney Sussex College,
 Sidney Street
 Cambridge
 CB2 3HU
 UK



The College is located in the historic heart of Cambridge. Sidney is one of the smaller Cambridge Colleges, and is renowned for its warm and welcoming atmosphere and friendly community. Proud of their long history (founded in 1596 – the youngest of the ‘old’ Cambridge Colleges), they are modern and inclusive in outlook.





There is not parking at the college, the main entrance is through Sidney Street directly opposite the supermarket Sainsbury's.



Cambridge



Cambridge is a university city and the county town of Cambridgeshire, England, on the River Cam about 50 miles (80 km) north of London. Cambridge manages to combine its role as an historic city with a world-renowned University and it is an internationally acknowledged centre of excellence for technology and science.

The University of Cambridge (www.cam.ac.uk) was founded in 1209 and it is one of the top five universities in the world. It has 31 colleges, the oldest being Peterhouse (1284) and the newest being Robinson (1979).



Accommodation and Travel Information

Cambridge is located 50 miles (80 km) north of London and for international delegates we recommend travel via London Stansted airport as the most convenient.

Approximate travel times:

- London Stansted Airport - 50 mins by car – 35 mins by train
- London Luton Airport – 1 hour by car – 90 mins (by train via London)
- London Heathrow Airport - 90 mins by car – 1h30 mins (by train with 2 changes)
- London Gatwick Airport – 100 mins by car – 2 hours by train
- London King’s Cross and St Pancras Eurostar link – 50 mins by train

Some useful websites and contacts:

Train: <http://www.nationalrail.co.uk/>
<https://www.thetrainline.com/>

Buses: www.national.express.co.uk

Taxis: Panther Taxis: 01223 715715
A1 Cabcom Taxis 01223 313131 – 525555
Camcab Taxis: 01223 704704

<https://www.panthertaxi.co.uk/>
<http://www.a1cabco.co.uk/>
<http://www.camcab.co.uk/>

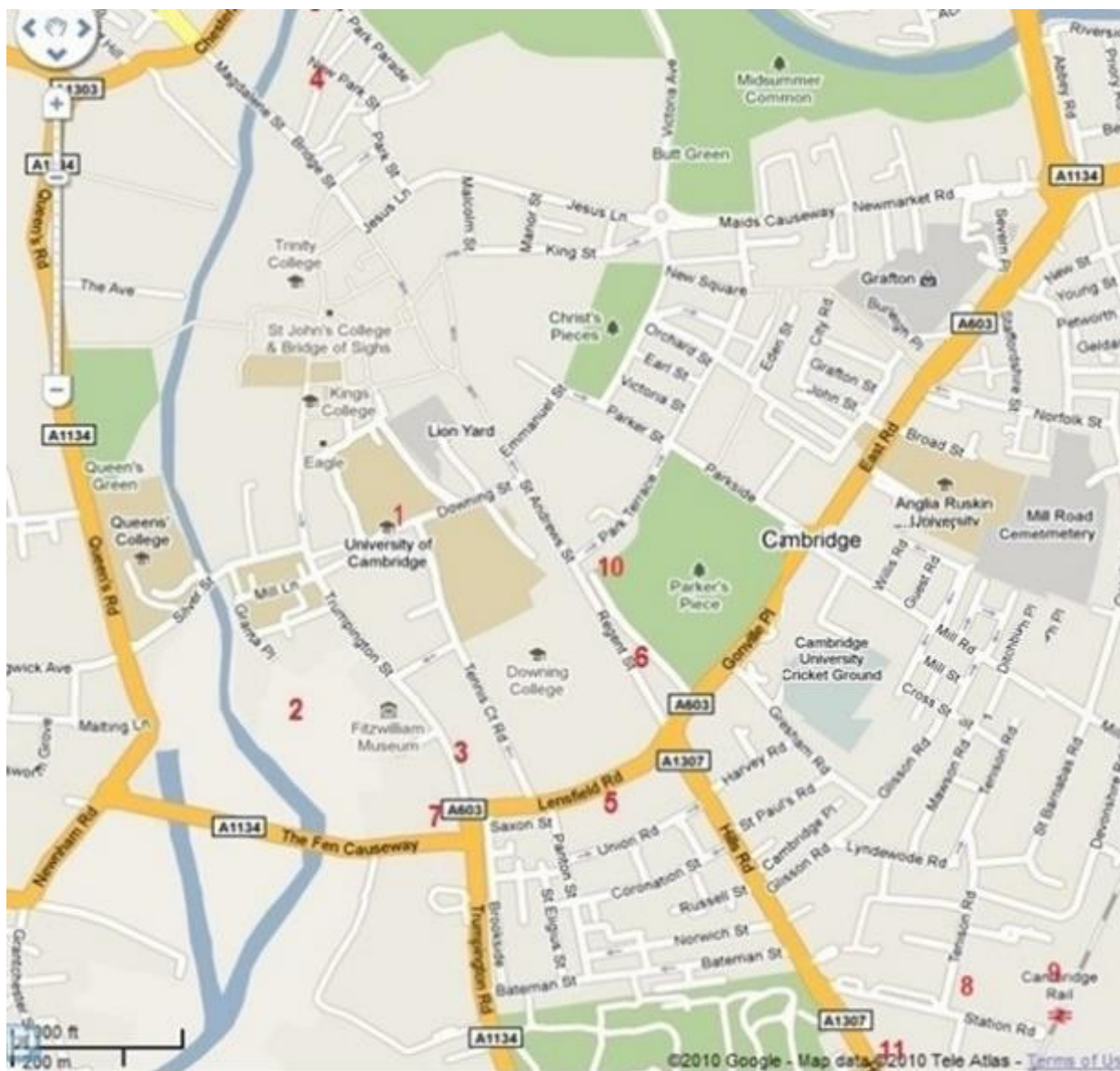
Map of Cambridge and List of Hotels

We have selected a handful of hotels most of them located in the city centre; we have been numbered them on the map for your convenience. Those located outside the city center are towards the side of the meeting venue (see second map). This is for your guidance only. there are however many others hotels/B&B the city offers where you could choose using a normal hotel booking search engine.

University Colleges also offer good selection of bed and breakfast accommodation, mostly located centrally. Some offer accommodation through the whole year, others only during the summer months. You could find out more at the following link, or directly through the college of your choice:

<http://www.universityrooms.com/en/city/cambridge/home>

Map A



Map B



Hilton Cambridge City Centre– 4* **map A: hotel 1**



Hilton Cambridge City Centre (formerly known as Cambridge City Hotel) enjoys a prime location in the heart of the City Centre. Located within walking distance from Kings College and Downing College as well as easy access to Cambridge Business Park. High Speed Internet access and WiFi is offered in all bedrooms, meeting rooms and hotel's lounge. The Fitness Room offers Cardiovascular and muscle toning equipment with a sauna and solarium also available. Nearby is The Grand Arcade, an exciting new city centre retail development that brings a 21st Century Shopping experience to Cambridge. On-site Car Parking available at a charge.

Booking available at:
[Hilton Cambridge City Centre](#)

Contact details:
 Hilton Cambridge City Centre
 20 Downing Street
 Cambridge CB2 3DT
 Telephone: 44-1223-464491
 Fax: +44-1223-464440
 Email: stnhc_hotel@hilton.com

Graduate Cambridge Hotel – 4 * **map A: hotel 2**



Nestled along the banks of The River Cam and in the heart of city centre, this idyllic retreat is perfect for history lovers, locals and city-dwellers seeking a much-needed getaway.

Booking available at:
[The Graduate Cambridge Hotel](#)

Contact details:
 The Graduate Cambridge Hotel
 Granta Place, Mill Lane
 Cambridge CB2 1RT
 United Kingdom
 Tel: +44 1223 259988

Hotel du Vin & Bistro – 4* **map A: hotel 3**



In a Grade II Listed building, Hotel du Vin Cambridge has luxurious boutique rooms with monsoon showers and Egyptian linen. Cambridge city centre is a 5-minute walk away (Downing College approximately 10 min walk away). The French bistro at Hotel Du Vin serves a modern menu of European cuisine and houses an open-plan style kitchen. Set in cosy cellar rooms, the bar at Hotel Du Vin & Bistro serves a range of fine wines, champagne and cocktails. Wired internet is available in the hotel rooms and is free of charge. Private parking is possible at a location nearby (reservation is needed) and costs £16 per day.

Booking available at:

[Hotel du Vin & Bistro Cambridge](#)

Contact details:

Hotel du Vin & Bistro Cambridge,
 15-19 Trumpington Street
 Cambridge CB2 1QA
 Telephone: ++44 (0) 1223 227 330
 Email: info.cambridge@hotelduvin.com

The Varsity Hotel – 4* *map A-B: hotel 4*



Situated in the centre of Cambridge, near the edge of the picturesque River Cam, The Varsity Hotel and Spa offers individual modern rooms, and impressive rooftop views. Each room is named after a different Cambridge college, and features an LCD TV, DVD library, free Wi-Fi, and an iPod dock. Most rooms offer monsoon showers and under-floor heating. Some rooms have balconies and views of the college rooftops. The Varsity offers guests access to the Glassworks Gym and Spa, with hot tub, steam room, sauna and exercise classes. The hotel is just a few minutes' walk from Kings College Chapel, Trinity College, The Grand Arcade shopping centre is 10-min walk away. No parking available.

Booking available at:

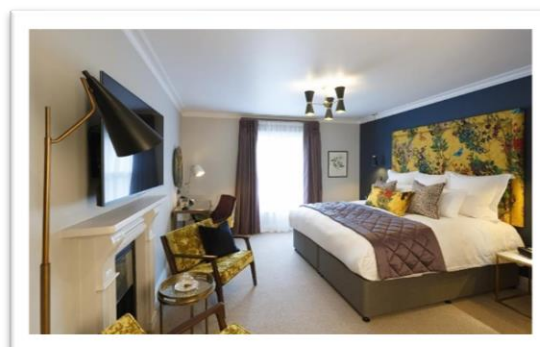
[The Varsity Hotel & Spa](#)

Contact details:

The Varsity Hotel & Spa
 Thompson's Lane (off Bridge street)
 Cambridge CB5 8AQ
 Tel: +44 (0)1223 30 60 30
 Fax: +44 (0)1223 30 50 70
 Email: info@thevarsityhotel.co.uk

The Gonville Hotel – 4*

map A: hotel 5



Overlooking Parker's Piece, Best Western Gonville Hotel is a 5-minute walk from Downing College and the historic centre of Cambridge. Refurbished to a high standard, the hotel offers a traditional restaurant and rooms with free Wi-Fi. The spacious bedrooms each have a flat-screen TV and air conditioning. Guests can enjoy fresh British cuisine and locally sourced produce in the elegant Chancellors Restaurant. The Atrium Brasserie offers afternoon teas, hearty breakfasts and light lunches. Gonville Hotel is a 15-min walk from Cambridge Rail Station and 10-min walk away from The Grand Arcade shopping centre. The hotel offers limited car parking space for an additional fee.

Booking available at:

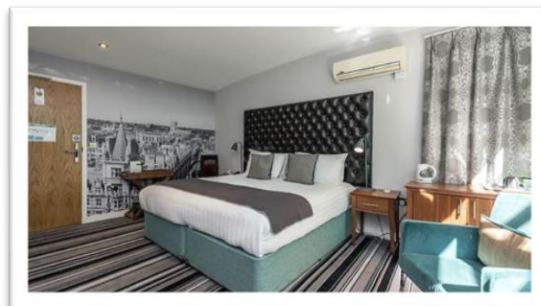
[The Gonville Hotel](#)

Contact details:

The Gonville Hotel
 Gonville Place,
 Cambridge CB1 1LY
 Tel: +44 (0) 1223 366611
 Email: info@gonvillehotel.co.uk

Regent Hotel Cambridge – 3*

map A: hotel 6



The Regent Hotel in Centre of Cambridge is a fine Georgian Grade II listed building. In 1871 it was the original home of the first five Newnham College Students. It is now a privately run Hotel owned by the same family since 1950.

The Regent Hotel in Cambridge, offers everything you'll need for the perfect stay in this beautiful and historic city, whether you're visiting for business or pleasure. Centrally located this Cambridge Accommodation is an easy stroll to all the city's attractions, and overlooks the famous Parkers Piece. All of the 22 en-suite bedrooms at the Hotel are air conditioned for the comfort and convenience of our customers and include free High Speed Internet Access throughout the property. No parking available.

Booking available at:

[Regent Hotel](#)

Contact details:

Regent Hotel
 41 Regent Street
 Cambridge CB2 1AB
 Tel: +44 (0)1223 351470
 Email: reservations@regenthotel.co.uk

The Royal Cambridge Hotel – 3* map A: hotel 7



Located on the edge of the city centre, The Royal Cambridge Hotel is your perfect base for exploring the beauty of historic Cambridge. The hotel is in Cambridge's centre, just a 5-minute walk from the historic Cambridge University Colleges. Cambridge Railway Station is 20 minutes' walk away. The elegant bedrooms each have a satellite TV, work desk and Wi-Fi access. Some rooms have a seating area, while all have a private bathroom and tea/coffee facilities. With a restaurant and bar, Royal Cambridge Hotel has limited on-site parking and free Wi-Fi.

Booking available at:

[The Royal Cambridge Hotel](#)

Contact details:

The Royal Cambridge Hotel
 Trumpington Street,
 Cambridge,
 Cambridgeshire,
 CB2 1PY, UK
 Tel: +44 (0) 330 102 7236*
 Email: reservations.cambridge@sjhotels.co.uk

Clayton Hotel – 4* **map A: hotel 8**

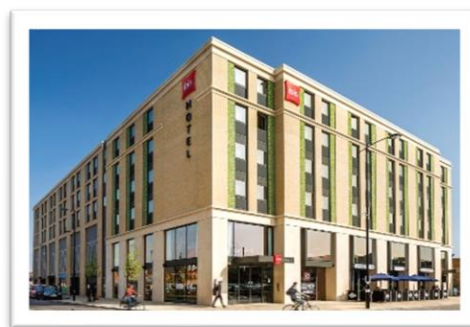
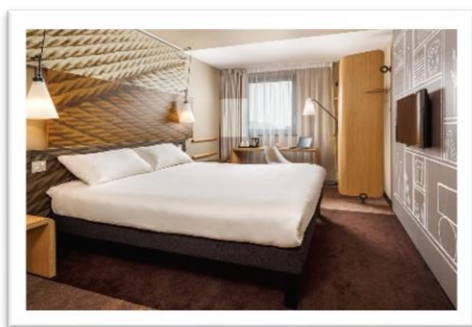


The Clayton Hotel Cambridge, is a family-friendly hotel in Cambridge city centre, located near the beautiful Botanic Gardens and just a short 10 minutes' walk from Cambridge city centre. The hotel has 155 bedrooms individually designed with sumptuous King Koil beds, dark wooden headboards, colourful patterned soft furnishings and marble bathrooms. Free WiFi is available at this hotel.

Booking available at:
[Clayton Hotel](#)

Contact details:
 Clayton
 27-29 Station Road,
 Cambridge
 CB1 2FB, UK
 Tel: +44 1223792888
 Email: info.cambridge@claytonhotels.com

Ibis Cambridge Central Station Hotel– 3* **map A: Hotel 9**



The ibis Cambridge Central Station has a 24-hour front desk that offers express check-in and check-out. The on-site coffee shop, Chill#2, serves hot and chilled snacks and pizzas, as well as coffee and pastries.

All rooms at the property feature single or double beds with the signature Sweetbed by ibis mattress. Additional amenities include Freeview TV, tea/coffee making facilities and a work desk. Guests will find en-suite facilities in each room, with a shower and a hairdryer.

Booking available at:

[ibis Cambridge Central Station](#)

Contact details:

Ibis Cambridge Central Station
 2 Station Square
 CB12GA
 CAMBRIDGE
 UNITED KINGDOM
 Tel: (+44)1223 320960
 Email: h8548@accor.com

University Arms, Autograph Collection – 4*

map A: Hotel 10



University Arms, Cambridge, re-created in 2018 by architect John Simpson and interior designer Martin Brudnizki, offers 192 rooms and suites, with views over Parker’s Piece, historic Regent Street, and the hotel’s inner courtyard. The style reflects classic Edwardian interiors with bespoke, leather-padded writing desks, low ottomans and rooms full of natural light. The result is ambitious, beautiful, and full of life. Occupying ground floor of University Arms, Cambridge, Parker’s Tavern is a quintessentially English brasserie. Chef Director Tristan Welch has designed every dish to be a whimsical re-imagining of a British classic, sourced from field, fen and seas. This is where you will find plates piled high with Norfolk fruits de mer, or in winter, suckling pig with wild mushrooms, and Tristan’s signature pie of the day. You can taste England on every plate.

University Arms, Autograph Collection

Booking available at:

[University Arms, Autograph Collection](#)

Contact details:

University Arms, Autograph Collection
 Regent Street,
 Cambridge CB2 1AD
 United Kingdom
 Tel: +44 1223 606066

Centennial Hotel- 3*

map A: Hotel 11



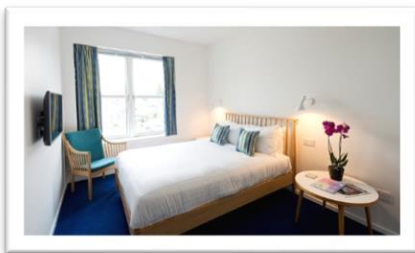
Recently extended, The Centennial offers a pleasing combination of home comforts and conference facilities. Accommodating business travellers and tourists visiting alike, The Centennial meets the needs of all staying in Cambridge. Located close to the Railway Station, 10-15 minute walk from the City Center and on major bus routes.

Booking available at:
[Centennial Hotel](#)

Contact details:
 Centennial Hotel,
 63-71 Hills Road, CB2 1PG
 Cambridge
 Telephone: 01223 314652
 Email: reception@centennialhotel.co.uk

The Møller Centre

map B: Hotel 13



At the Møller Centre we offer our guests a comfortable, distraction-free, four-star luxury bedroom which will provide them with a good night's sleep and improve the impact of your event.

Booking available at:
[The Møller Centre](#)

Contact details:
 The Møller Centre
 Churchill College Grounds Storeys Way,
 Cambridge CB3 0DE
 T: +44 (0)1223 465500
 E: reception.moller@chu.cam.ac.uk

Hotel Felix – 4*

map B: Hotel 12



In a privately-owned Victorian Villa, Hotel Felix is a 5-minute drive from the historic city centre of Cambridge. The luxury hotel has an award-winning restaurant, leafy gardens and boutique bedrooms with stylish decor. A continental and full English breakfast are available at an additional charge each morning. Graffiti Restaurant serves modern Mediterranean cuisine and fine wines. With vibrant modern art and a garden terrace, the chic bar offers a range of classic cocktails and gourmet snacks. Guests can enjoy views over the large terrace and landscaped gardens. Just 1.5 miles from the historic centre of Cambridge, Hotel Felix is a 5-minute drive from the A14 and M11 motorways. There is free on-site parking, and the College Backs are just 2 miles away

Booking available at:

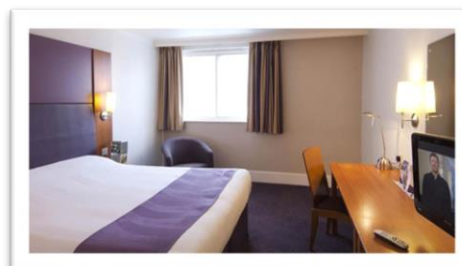
[Hotel Felix](#)

Contact details:

Whitehouse Lane,
Huntingdon Road,
Cambridge, CB3 0LX, UK
Telephone: (01223) 277977
Email: help@hotelfelix.co.uk

Premier Inn Cambridge North – Girton – 3*

Not in map



This Premier Inn hotel is very close to the colleges and city centre and there are good transport links to the city centre and further afield too It has free parking. Enjoy family-friendly en-suite rooms and an on-site Beefeater restaurant.

Booking available at:

[Premier Inn North - Girton](#)

Contact details:

Premier Inn North - Girton

Huntingdon Road,
Cambridge, CB3 0DL,
United Kingdom
Tel: 0871 527 8188
Fax: 01223 277248

Premier Inn Cambridge (A14-J32) – 3* **Not in map**



Easy reach of the city's attractions in Cambridge. Our Orchard Park hotel is just off Junction 32 of the A14 to offer the ultimate in convenience to travellers, and our Cambridge North hotel is close to the M11, providing quick access to London and the rest of the UK. Our hotels in Cambridge are also close to Cambridge Railway Station and Cambridge City Airport - so however you're travelling to Cambridge, our hotels are always on your doorstep.

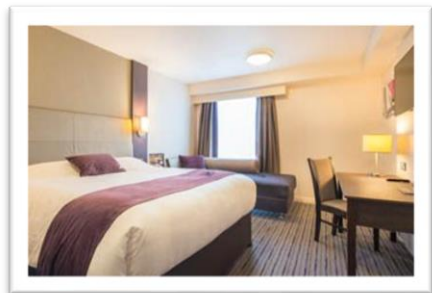
Booking available at:

[Premier Inn](#)

Contact Details:

Premier Inn
Ring Fort Road
Cambridge
Cambridgeshire
CB4 2GW
Tel: 0871 527 8186

Premier Inn - Cambridge City East Hotel -3* **Not in map**



The Cambridge City East hotel is the perfect place to rest your head when visiting this internationally-renowned University City. A guided tour is a great way to learn more about this beautiful city, which is steeped in rich cultural and academic history.

Cambridge is a must for art lovers, with the Fitzwilliam Museum and Ruskin Gallery within walking distance of the hotel. And for an authentic Cambridge experience, you've to try punting on the river. After a busy day, head back to the hotel and sink into one of our brand new, slumber-inducing, king-size Hypnos beds.

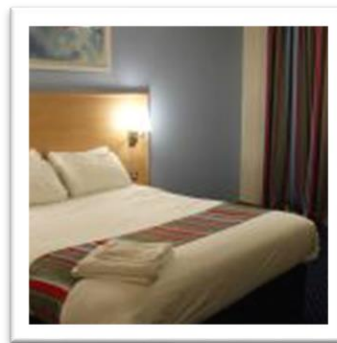
Booking available at:

[Premier Inn](#)

Contact Details:

Cambridge City East Hotel
 Newmarket Road, Cambridge,
 Cambridgeshire CB1 3EP
 T: 0871 527 9396*More info
 F: 0871 527 9397

Travel Lodge Cambridge Central – 3* Not in Map



The Travel Lodge is located at Cambridge Leisure Park, a short walk from city centre, or to the sightseeing bus stop which is opposite the train station. Plenty of parking. Excellent facilities, several restaurants, cinema, bowling, supermarkets, coffee shops.

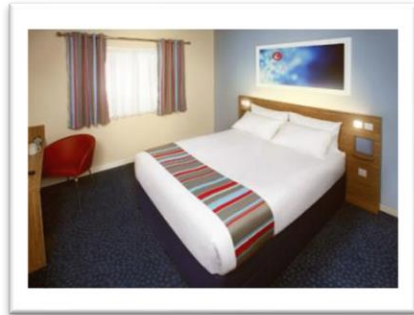
Booking available at:

[Travel Lodge Cambridge Central](#)

Contact Details:

Travel Lodge
 Cambridge Leisure Park
 Clifton Way,
 Cambridge
 CB1 7DY

Travelodge Cambridge Orchard Park - 3* **Not in Map**

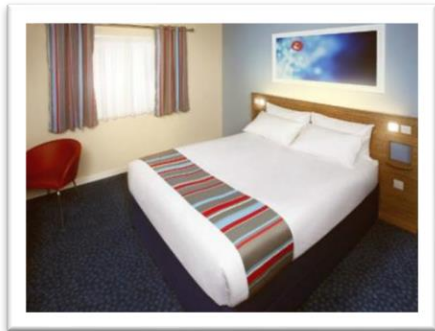


Located 1.2 miles from the River Cam and 4 miles from Cambridge Airport, the Cambridge Orchard Park Hotel is an ideal choice for those seeking accommodation in this picturesque city for either business or leisure. Cambridge Orchard Park Hotel is very convenient for guests wanting access to Cambridge Science Park, Cambridge Business Park or St. John's Innovation Park, which can be found less than a mile away.

Booking available at:
[Travelodge Cambridge Orchard Park](#)

Contact details:
 Travelodge Cambridge Orchard Park
 Chieftain Way
 Orchard Park
 Kings Hedges Road
 Cambridge, Cambridgeshire
 CB4 2WR
 Tel: 0871 984 6481?
 Fax: 01223 425 157

Travelodge Cambridge Newmarket Road - 3*



The Cambridge Newmarket Road Hotel is the ideal base for those looking to explore the quaint, historic University City. The area boasts a number of celebrated museums and art galleries, as well as a wide range of intricate architecture and majestic college buildings all of which are within walking distance. The Virtual Aviation centre where you can try your hand at a flight simulator experience is also nearby while Linton Zoo and Gardens, a family-friendly venue which is home to everything from African lions to Brazilian tapirs, is just 0.

Booking available at:

[Travelodge Cambridge Newmarket Road](#)

Contact details:

Travelodge Cambridge Newmarket Road
180-190 Newmarket Road,
Cambridge,
CB5 8HF
Tel: 0333 014 6269